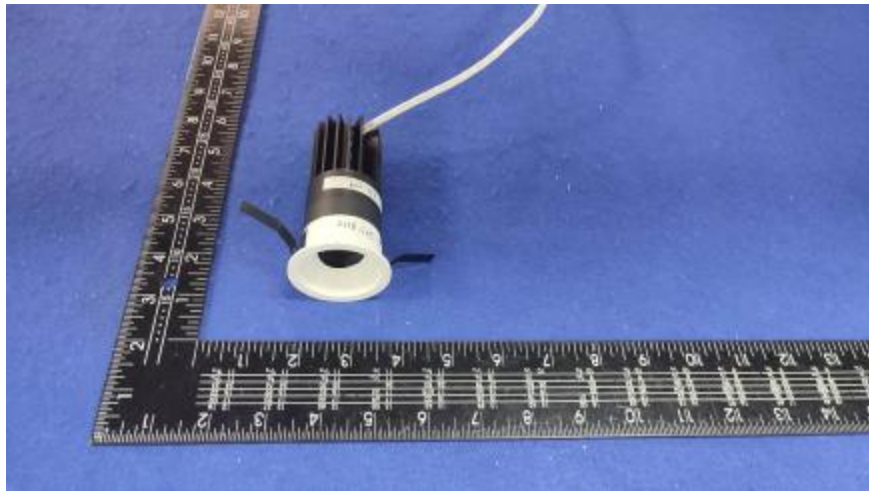


### Luminaire Photograph



Light Output Ratio:	67.4%	
Luminaire Power:	9.36 W	
SHR Nominal:	0.00	Calculated using the TM5
SHR Maximum:	0.30	fine grid method.

C Range: 0 - 360DEG  
C Interval: 30.0DEG  
Test Speed: HIGH  
Temperature: 25.3 °C  
Operators: Zoe  
Test Date: 2022-11-1

Range: 0 - 180DEG  
Interval: 1.0DEG  
Test System: EVERFINE GO-SPEX500\_V1 SYSTEM V2.00.416  
Humidity: 65.0%  
Test Distance: 3.160m [K=1.0000]  
Remarks: LAMP: CMA1306-0000-000F0U0A30G Ra:90  
LENS: PM-1084A 24R  
NO DRIVER: 500mA  
30minutes warm-up

## LUMINOUS INTENSITY DISTRIBUTION DIAGRAM

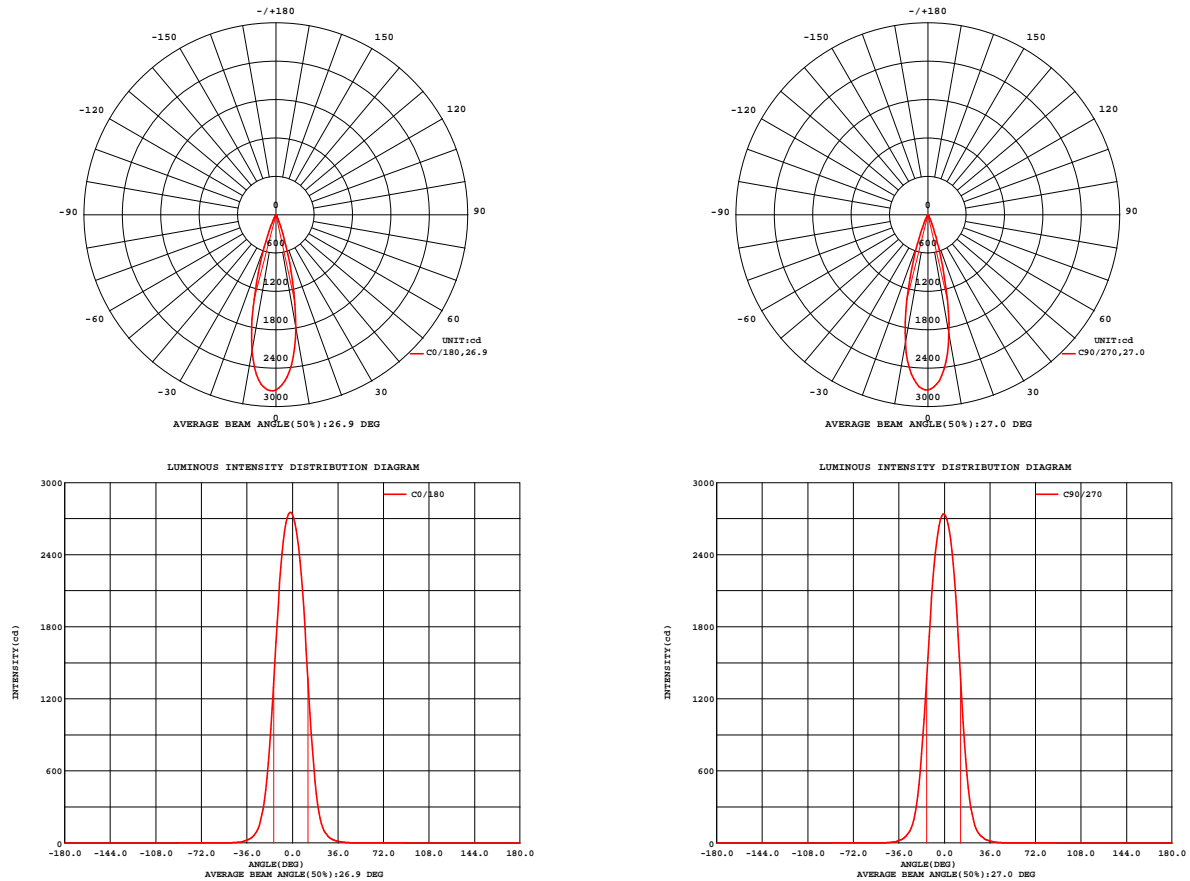


Fig. C0/C180

Fig. C90/C270

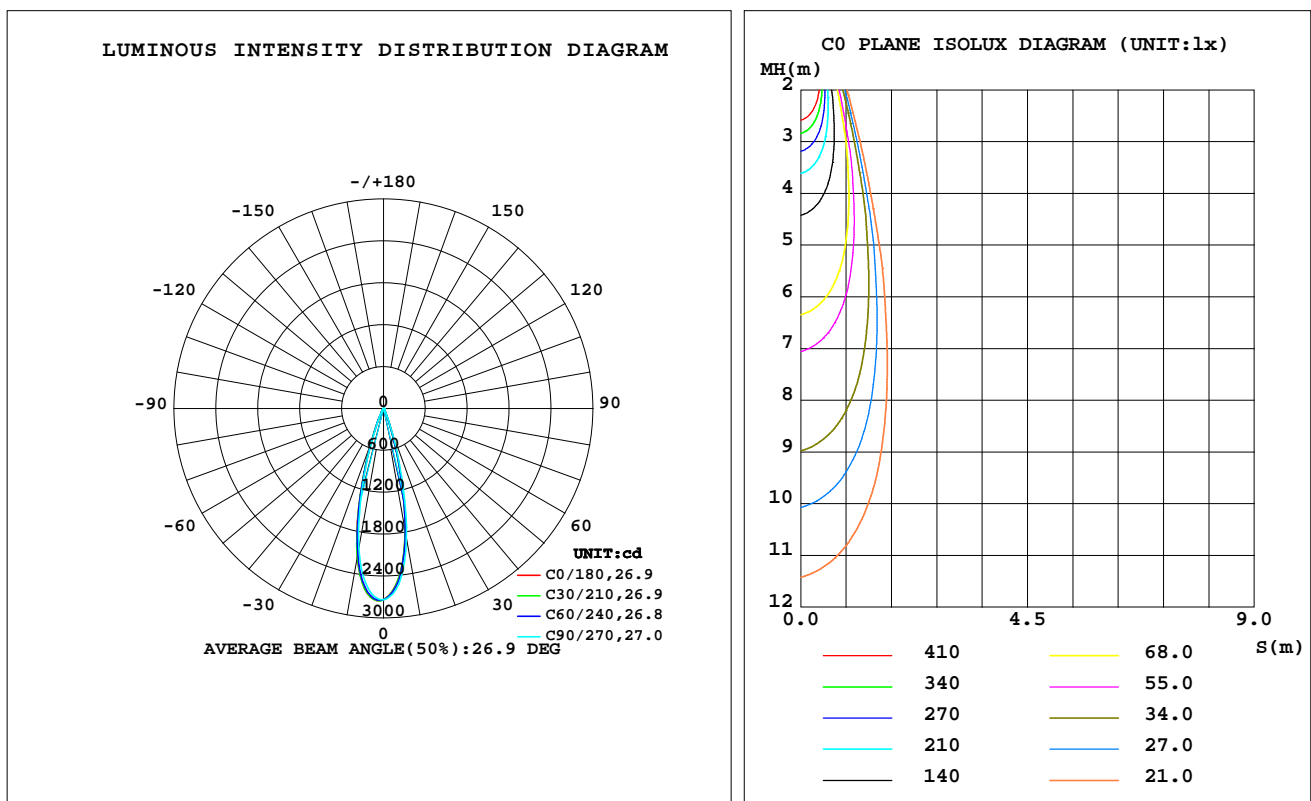
C Range: 0 - 360DEG  
C Interval: 30.0DEG  
Test Speed: HIGH  
Temperature: 25.3 °C  
Operators: Zoe  
Test Date: 2022-11-1

Range: 0 - 180DEG  
Interval: 1.0DEG  
Test System: EVERFINE GO-SPEX500\_V1 SYSTEM V2.00.416  
Humidity: 65.0%  
Test Distance: 3.160m [K=1.0000]  
Remarks: LAMP: CMA1306-0000-000F0U0A30G Ra: 90  
LENS: PM-1084A 24R  
NO DRIVER: 500mA  
30minutes warm-up

## LUMINAIRE PHOTOMETRIC TEST REPORT

Test:U:18.727V I:0.4998A P:9.3597W PF:1.0000 Freq:59.98Hz Lamp Flux:919.82x1 lm		
NAME: 2118.565-LEA-09B	TYPE:	WEIGHT:
SPEC.: 3000K	DIM.:	SERIAL No.: 2211011096
MFR.: RISE	SUR.: 0.001256m2	Shielding Angle:

DATA OF LAMP		PHOTOMETRIC DATA Eff: 66.27 lm/W			
MODEL	CREE	I <sub>max</sub> (cd)	2753	S/MH(C0/180)	0.46
NOMINAL POWER(W)	9	LOR(%)	67.4	S/MH(C90/270)	0.45
RATED VOLTAGE(V)	18	TOTAL FLUX(lm)	620.27	UP,DN(C0-180)	0.0,31.3
NOMINAL FLUX(lm)	919.82	CIE CLASS	DIRECT	UP,DN(C180-360)	0.0,36.1
LAMPS INSIDE	1	up(%)	0.0	CIBSE SHR NOM	0.00
TEST VOLTAGE(V)	18	down(%)	67.4	CIBSE SHR MAX	0.30



C Range: 0 - 360DEG  
C Interval: 30.0DEG  
Test Speed: HIGH  
Temperature:25.3℃  
Operators:Zoe  
Test Date:2022-11-1

Range: 0 - 180DEG  
Interval: 1.0DEG  
Test System:EVERFINE GO-SPEX500\_V1 SYSTEM V2.00.416  
Humidity:65.0%  
Test Distance:3.160m [K=1.0000]  
Remarks: LAMP:CMA1306-0000-000F0U0A30G Ra:90  
LENS:PM-1084A 24R  
NO DRIVER:500mA  
30minutes warm-up

## ZONAL FLUX DIAGRAM

### ZONAL FLUX DIAGRAM:

	C0	C45	C90	C135	C180	C225	C270	C315		zone	total	%lum,lamp
10	1787	1792	1891	2013	2164	2147	2041	1932	0- 10	225.3	225.3	36.3,24.5
20	324.6	320.4	366.4	433.9	541.1	542.1	485.6	419.0	10- 20	298.8	524.2	84.5,57
30	39.85	40.96	48.39	56.87	66.40	66.35	58.15	49.84	20- 30	76.24	600.4	96.8,65.3
40	6.579	6.485	7.003	9.065	10.32	9.693	8.803	7.617	30- 40	15.32	615.7	99.3,66.9
50	1.449	1.402	1.450	1.632	1.805	1.473	1.288	1.356	40- 50	2.883	618.6	99.7,67.3
60	0.7207	0.6157	0.6084	0.6216	0.7613	0.6758	0.6670	0.6733	50- 60	0.8446	619.5	99.9,67.3
70	0.2802	0.2863	0.3309	0.3430	0.3596	0.4238	0.4851	0.3446	60- 70	0.5411	620.0	100,67.4
80	0.1150	0.1131	0.1257	0.1195	0.1273	0.1116	0.1109	0.1055	70- 80	0.2052	620.2	100,67.4
90	0	0	0	0	0	0	0	0	80- 90	0.0634	620.3	100,67.4
100	0	0	0	0	0	0	0	0	90-100	0	620.3	100,67.4
110	0	0	0	0	0	0	0	0	100-110	0	620.3	100,67.4
120	0	0	0	0	0	0	0	0	110-120	0	620.3	100,67.4
130	0	0	0	0	0	0	0	0	120-130	0	620.3	100,67.4
140	0	0	0	0	0	0	0	0	130-140	0	620.3	100,67.4
150	0	0	0	0	0	0	0	0	140-150	0	620.3	100,67.4
160	0	0	0	0	0	0	0	0	150-160	0	620.3	100,67.4
170	0	0	0	0	0	0	0	0	160-170	0	620.3	100,67.4
180	0	0	0	0	0	0	0	0	170-180	0	620.3	100,67.4
DEG	LUMINOUS INTENSITY:cd									UNIT:lm		

C Range: 0 - 360DEG  
C Interval: 30.0DEG  
Test Speed: HIGH  
Temperature:25.3℃  
Operators:Zoe  
Test Date:2022-11-1

Range: 0 - 180DEG  
Interval: 1.0DEG  
Test System:EVERFINE GO-SPEX500\_V1 SYSTEM V2.00.416  
Humidity:65.0%  
Test Distance:3.160m [K=1.0000]  
Remarks: LAMP:CMA1306-0000-000F0U0A30G Ra:90  
LENS:PM-1084A 24R  
NO DRIVER:500mA  
30minutes warm-up

## LUMINANCE LIMITATION CURVES

Test:U:18.727V I:0.4998A P:9.3597W PF:1.0000 Freq:59.98Hz  
Lamp Flux:919.82x1 lm

NAME: 2118.565-LEA-09B

TYPE:

WEIGHT:

SPEC.: 3000K

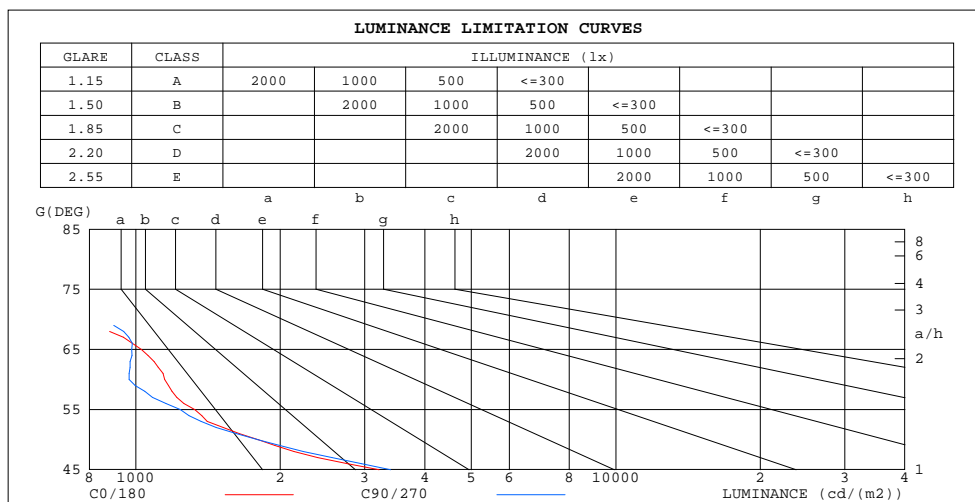
DIM.:

SERIAL No.: 2211011096

MFR.: RISE

SUR.: 0.001256m2

Shielding Angle:



LUMINANCE cd/(m2)		
G(180)	C0/180	C90/270
85	556	599
80	528	576
75	572	606
70	653	770
65	1026	980
60	1149	968
55	1327	1239
50	1797	1795
45	3210	3393

C Range: 0 - 360DEG  
C Interval: 30.0DEG  
Test Speed: HIGH  
Temperature:25.3℃  
Operators:Zoe  
Test Date:2022-11-1

Range: 0 - 180DEG  
Interval: 1.0DEG  
Test System:EVERFINE GO-SPEX500\_V1 SYSTEM V2.00.416  
Humidity:65.0%  
Test Distance:3.160m [K=1.0000]  
Remarks: LAMP:CMA1306-0000-000F0U0A30G Ra:90  
LENS:PM-1084A 24R  
NO DRIVER:500mA  
30minutes warm-up

## CU AND LUMINAIRE BUDGETARY ESTIMATE DIAGRAM

Test:U:18.727V I:0.4998A P:9.3597W PF:1.0000 Freq:59.98Hz  
Lamp Flux:919.82x1 lm

NAME: 2118.565-LEA-09B

TYPE:

WEIGHT:

SPEC.: 3000K

DIM.:

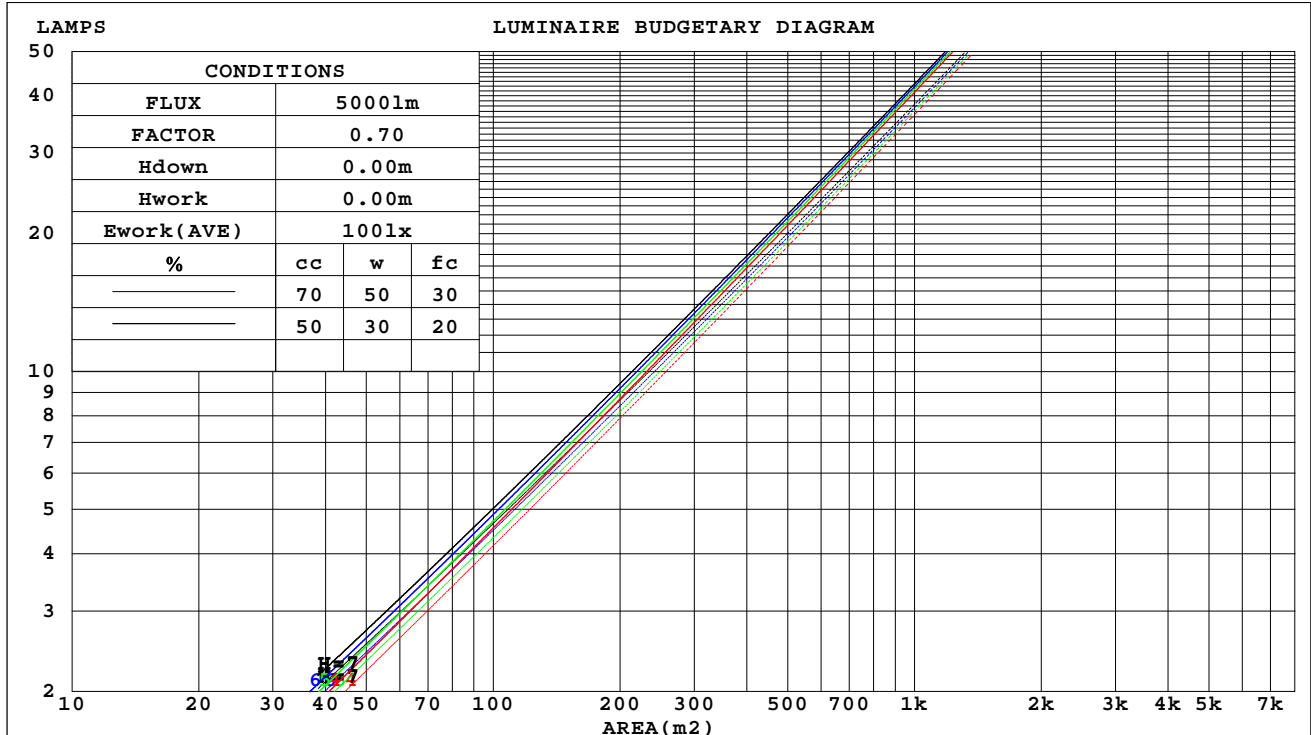
SERIAL No.: 2211011096

MFR.: RISE

SUR.: 0.001256m2

Shielding Angle:

cc	80%			70%			50%			30%			10%			0
w	50%	30%	10%	50%	30%	10%	50%	30%	10%	50%	30%	10%	50%	30%	10%	0
fc	20%			20%			20%			20%			20%			0
RCR	RCR:Room Cavity Ratio															



C Range: 0 - 360DEG  
C Interval: 30.0DEG  
Test Speed: HIGH  
Temperature:25.3℃  
Operators:Zoe  
Test Date:2022-11-1

Range: 0 - 180DEG  
Interval: 1.0DEG  
Test System:EVERFINE GO-SPEX500\_V1 SYSTEM V2.00.416  
Humidity:65.0%  
Test Distance:3.160m [K=1.0000]  
Remarks: LAMP:CMA1306-0000-000F0U0A30G Ra:90  
LENS:PM-1084A 24R  
NO DRIVER:500mA  
30minutes warm-up

### WEC AND CCEC

Test:U:18.727V I:0.4998A P:9.3597W PF:1.0000 Freq:59.98Hz Lamp Flux:919.82x1 lm		
NAME: 2118.565-LEA-09B	TYPE:	WEIGHT:
SPEC.: 3000K	DIM.:	SERIAL No.: 2211011096
MFR.: RISE	SUR.: 0.001256m2	Shielding Angle:

cc	80%			70%			50%			30%			10%			0	
w	50%	30%	10%	50%	30%	10%	50%	30%	10%	50%	30%	10%	50%	30%	10%	0	
fc	20%			20%			20%			20%			20%			0	
RCR	RCR:Room Cavity Ratio						Wall Exitance Coefficients(WEC)										
0.0																	
1.0	.090	.051	.016	.085	.049	.015	.077	.044	.014	.069	.040	.013	.062	.036	.012		
2.0	.083	.045	.014	.079	.044	.013	.073	.040	.013	.066	.037	.012	.060	.034	.011		
3.0	.077	.041	.012	.074	.040	.012	.068	.037	.011	.063	.035	.011	.058	.032	.010		
4.0	.072	.038	.011	.070	.036	.011	.065	.034	.010	.060	.032	.010	.056	.031	.009		
5.0	.068	.035	.010	.066	.034	.010	.062	.032	.009	.058	.031	.009	.054	.029	.009		
6.0	.064	.032	.009	.062	.032	.009	.059	.030	.009	.056	.029	.008	.053	.028	.008		
7.0	.061	.030	.009	.059	.030	.008	.056	.028	.008	.053	.027	.008	.051	.026	.008		
8.0	.058	.028	.008	.057	.028	.008	.054	.027	.008	.052	.026	.008	.049	.025	.007		
9.0	.056	.027	.008	.054	.026	.007	.052	.026	.007	.050	.025	.007	.048	.024	.007		
10.0	.053	.026	.007	.052	.025	.007	.050	.025	.007	.048	.024	.007	.046	.023	.007		

cc	80%			70%			50%			30%			10%			0
w	50%	30%	10%	50%	30%	10%	50%	30%	10%	50%	30%	10%	50%	30%	10%	0
fc	20%			20%			20%			20%			20%			0
RCR	RCR:Room Cavity Ratio			Ceiling Cavity Exitance Coefficients(CCEC)												
0.0	.128	.128	.128	.110	.110	.110	.075	.075	.075	.043	.043	.043	.014	.014	.014	
1.0	.113	.106	.100	.097	.091	.086	.066	.063	.060	.038	.036	.035	.012	.012	.011	
2.0	.101	.090	.080	.086	.077	.069	.059	.053	.048	.034	.031	.028	.011	.010	.009	
3.0	.091	.076	.065	.078	.066	.056	.053	.046	.039	.031	.027	.023	.010	.009	.008	
4.0	.082	.066	.054	.070	.057	.047	.048	.040	.033	.028	.023	.019	.009	.008	.006	
5.0	.075	.058	.045	.064	.050	.039	.044	.035	.028	.026	.020	.016	.008	.007	.005	
6.0	.069	.051	.038	.059	.044	.033	.041	.031	.023	.024	.018	.014	.008	.006	.005	
7.0	.064	.045	.032	.055	.039	.028	.038	.028	.020	.022	.016	.012	.007	.005	.004	
8.0	.059	.041	.028	.051	.035	.024	.035	.025	.017	.021	.015	.010	.007	.005	.003	
9.0	.055	.037	.024	.048	.032	.021	.033	.022	.015	.019	.013	.009	.006	.004	.003	
10.0	.052	.034	.021	.045	.029	.019	.031	.021	.013	.018	.012	.008	.006	.004	.003	

C Range: 0 - 360DEG  
C Interval: 30.0DEG  
Test Speed: HIGH  
Temperature:25.3℃  
Operators:Zoe  
Test Date:2022-11-1

Range: 0 - 180DEG  
Interval: 1.0DEG  
Test System:EVERFINE GO-SPEX500\_V1 SYSTEM V2.00.416  
Humidity:65.0%  
Test Distance:3.160m [K=1.0000]  
Remarks: LAMP:CMA1306-0000-000F0U0A30G Ra:90  
LENS:PM-1084A 24R  
NO DRIVER:500mA  
30minutes warm-up

## UGR(Unified Glare Rating) Table

Test:U:18.727V I:0.4998A P:9.3597W PF:1.0000 Freq:59.98Hz Lamp Flux:919.82x1 lm										
NAME: 2118.565-LEA-09B					TYPE:			WEIGHT:		
SPEC.: 3000K					DIM.:			SERIAL No.: 2211011096		
MFR.: RISE					SUR.: 0.001256m2			Shielding Angle:		
ceiling/cavity	0.7	0.7	0.5	0.5	0.3	0.7	0.7	0.5	0.5	0.3
walls	0.5	0.3	0.5	0.3	0.3	0.5	0.3	0.5	0.3	0.3
working plane	0.2	0.2	0.2	0.2	0.2	0.2	0.2	0.2	0.2	0.2
Room dimensions	Viewed crosswise					Viewed endwise				
x = 2H y = 2H	5.5	6.1	5.7	6.3	6.4	6.1	6.8	6.3	6.9	7.1
3H	5.5	6.1	5.7	6.2	6.4	6.1	6.7	6.3	6.9	7.0
4H	5.4	6.0	5.7	6.2	6.4	6.0	6.6	6.3	6.8	7.0
6H	5.4	5.9	5.7	6.1	6.4	6.0	6.5	6.3	6.8	7.0
8H	5.4	5.9	5.6	6.1	6.4	6.0	6.5	6.3	6.7	7.0
12H	5.3	5.8	5.6	6.1	6.3	5.9	6.4	6.2	6.7	6.9
4H 2H	5.4	5.9	5.6	6.1	6.3	6.0	6.5	6.2	6.7	6.9
3H	5.3	5.8	5.6	6.1	6.3	5.9	6.4	6.2	6.7	6.9
4H	5.3	5.7	5.6	6.0	6.3	5.9	6.3	6.2	6.6	6.9
6H	5.2	5.6	5.6	6.0	6.3	5.8	6.2	6.2	6.6	6.9
8H	5.2	5.6	5.6	5.9	6.3	5.8	6.2	6.2	6.5	6.9
12H	5.2	5.5	5.6	5.9	6.3	5.8	6.1	6.2	6.5	6.9
8H 4H	5.2	5.5	5.6	5.9	6.3	5.8	6.1	6.1	6.5	6.8
6H	5.1	5.4	5.6	5.8	6.2	5.7	6.0	6.1	6.4	6.8
8H	5.1	5.4	5.6	5.8	6.2	5.7	6.0	6.1	6.4	6.8
12H	5.1	5.3	5.6	5.8	6.2	5.7	5.9	6.1	6.4	6.8
12H 4H	5.1	5.5	5.5	5.8	6.2	5.7	6.1	6.1	6.4	6.8
6H	5.1	5.4	5.5	5.8	6.2	5.7	5.9	6.1	6.4	6.8
8H	5.1	5.3	5.5	5.7	6.2	5.6	5.9	6.1	6.3	6.8
Variations with the observer position at spacings(CIE Pub.117):										
S = 1.0H	+ 3.2 / - 4.7					+ 3.8 / - 5.2				
1.5H	+ 5.3 / - 4.4					+ 6.0 / - 5.0				
2.0H	+ 3.4 / - 1.4					+ 3.8 / - 1.6				

CIE Pub.117, 919.8 lm Total Lamp Luminous Flux Correct (8log(F/F0) = -0.3)  
Area: 0.001256 m2

C Range: 0 - 360DEG  
C Interval: 30.0DEG  
Test Speed: HIGH  
Temperature:25.3℃  
Operators:Zoe  
Test Date:2022-11-1

Range: 0 - 180DEG  
Interval: 1.0DEG  
Test System:EVERFINE GO-SPEX500\_V1 SYSTEM V2.00.416  
Humidity:65.0%  
Test Distance:3.160m [K=1.0000]  
Remarks: LAMP:CMA1306-0000-000F0U0A30G Ra:90  
LENS:PM-1084A 24R  
NO DRIVER:500mA  
30minutes warm-up



### UTILIZATION FACTORS TABLE

Test:U:18.727V I:0.4998A P:9.3597W PF:1.0000 Freq:59.98Hz Lamp Flux:919.82x1 lm		
NAME: 2118.565-LEA-09B	TYPE:	WEIGHT:
SPEC.: 3000K	DIM.:	SERIAL No.: 2211011096
MFR.: RISE	SUR.: 0.001256m2	Shielding Angle:

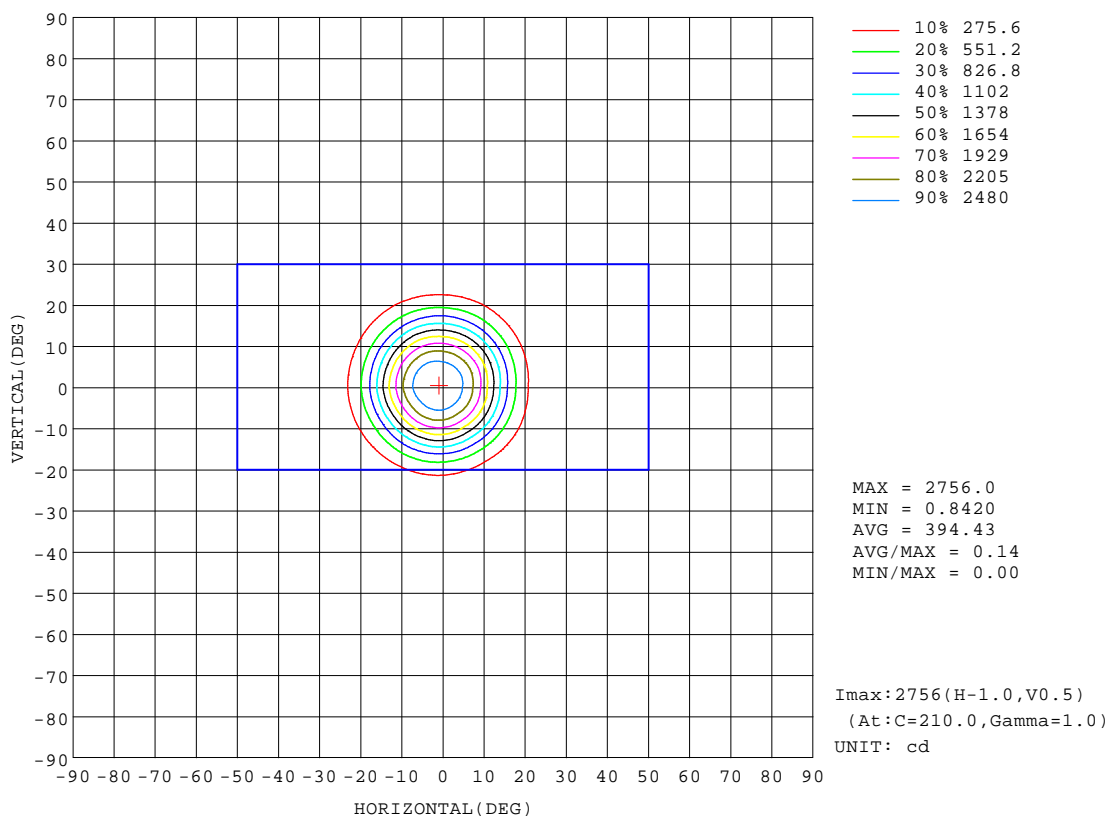
REFLECTANCE										
Ceiling	0.8	0.8	0.8	0.7	0.7	0.7	0.5	0.5	0.5	0
Walls	0.7	0.5	0.3	0.7	0.5	0.3	0.7	0.5	0.3	0
Working plane	0.2	0.2	0.2	0.2	0.2	0.2	0.2	0.2	0.2	0
ROOM INDEX	UTILIZATION FACTORS(PERCENT) $k(RI) \times RCR = 5$									
k = 0.60	61	58	55	61	58	55	61	57	55	53
0.80	66	63	60	66	62	60	65	62	60	58
1.00	69	65	63	68	65	63	67	65	63	60
1.25	71	68	66	70	68	66	69	67	65	62
1.50	73	70	68	72	69	67	70	68	67	64
2.00	74	72	70	73	71	69	71	70	68	65
2.50	75	73	71	74	72	70	72	70	69	65
3.00	76	74	72	75	73	72	73	71	70	66
4.00	77	76	74	76	74	73	73	72	71	67
5.00	78	77	76	77	75	75	74	73	72	67
ROOM INDEX	UF(total)									Direct
According to DIN EN 13032-2 2004			Suspended					SHRNOM = 1.25		

C Range: 0 - 360DEG  
C Interval: 30.0DEG  
Test Speed: HIGH  
Temperature:25.3℃  
Operators:Zoe  
Test Date:2022-11-1

Range: 0 - 180DEG  
Interval: 1.0DEG  
Test System:EVERFINE GO-SPEX500\_V1 SYSTEM V2.00.416  
Humidity:65.0%  
Test Distance:3.160m [K=1.0000]  
Remarks: LAMP:CMA1306-0000-000F0U0A30G Ra:90  
LENS:PM-1084A 24R  
NO DRIVER:500mA  
30minutes warm-up

## ISOCANDELA DIAGRAM

Test:U:18.727V I:0.4998A P:9.3597W PF:1.0000 Freq:59.98Hz Lamp Flux:919.82x1 lm		
NAME: 2118.565-LEA-09B	TYPE:	WEIGHT:
SPEC.: 3000K	DIM.:	SERIAL No.: 2211011096
MFR.: RISE	SUR.: 0.001256m2	Shielding Angle:

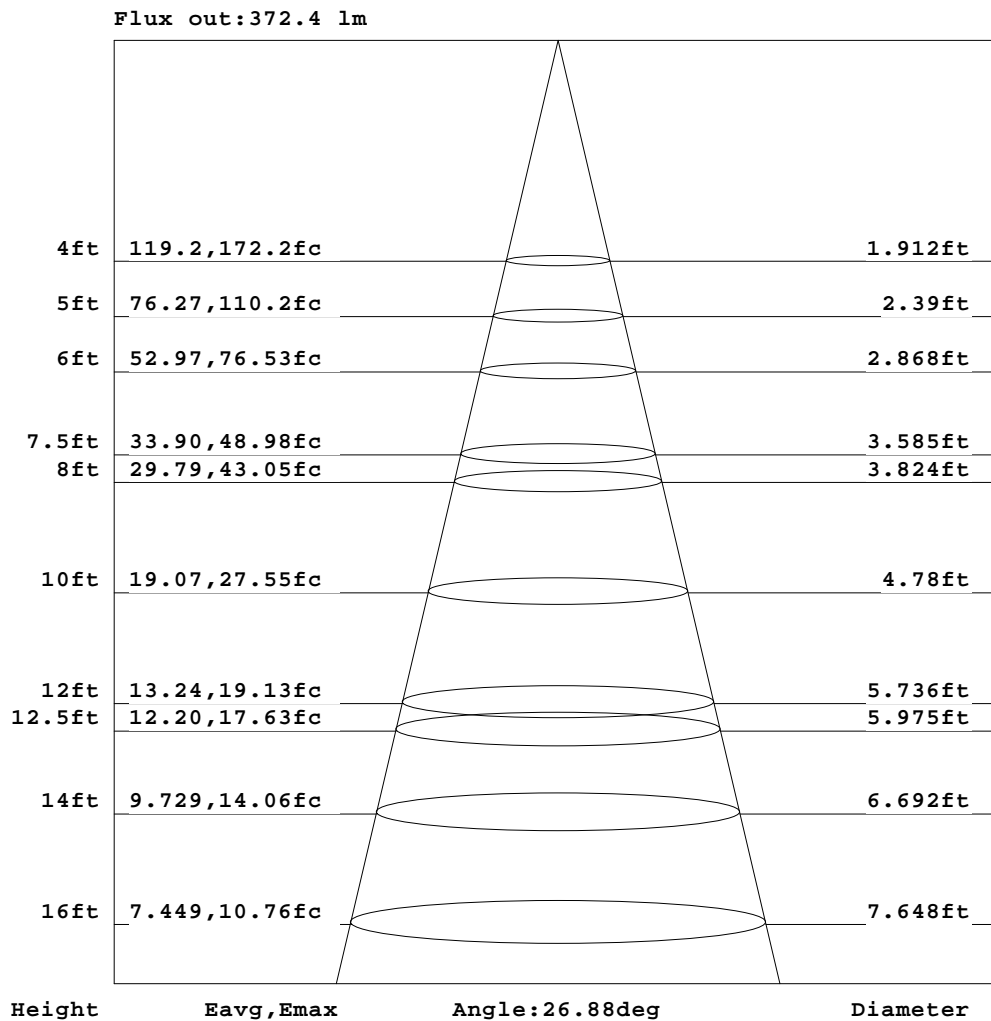


C Range: 0 - 360DEG  
C Interval: 30.0DEG  
Test Speed: HIGH  
Temperature:25.3℃  
Operators:Zoe  
Test Date:2022-11-1

Range: 0 - 180DEG  
Interval: 1.0DEG  
Test System:EVERFINE GO-SPEX500\_V1 SYSTEM V2.00.416  
Humidity:65.0%  
Test Distance:3.160m [K=1.0000]  
Remarks: LAMP:CMA1306-0000-000F0U0A30G Ra:90  
LENS:PM-1084A 24R  
NO DRIVER:500mA  
30minutes warm-up

## AAI Figure

Test:U:18.727V I:0.4998A P:9.3597W PF:1.0000 Freq:59.98Hz Lamp Flux:919.82x1 lm		
NAME: 2118.565-LEA-09B	TYPE:	WEIGHT:
SPEC.: 3000K	DIM.:	SERIAL No.: 2211011096
MFR.: RISE	SUR.: 0.001256m2	Shielding Angle:



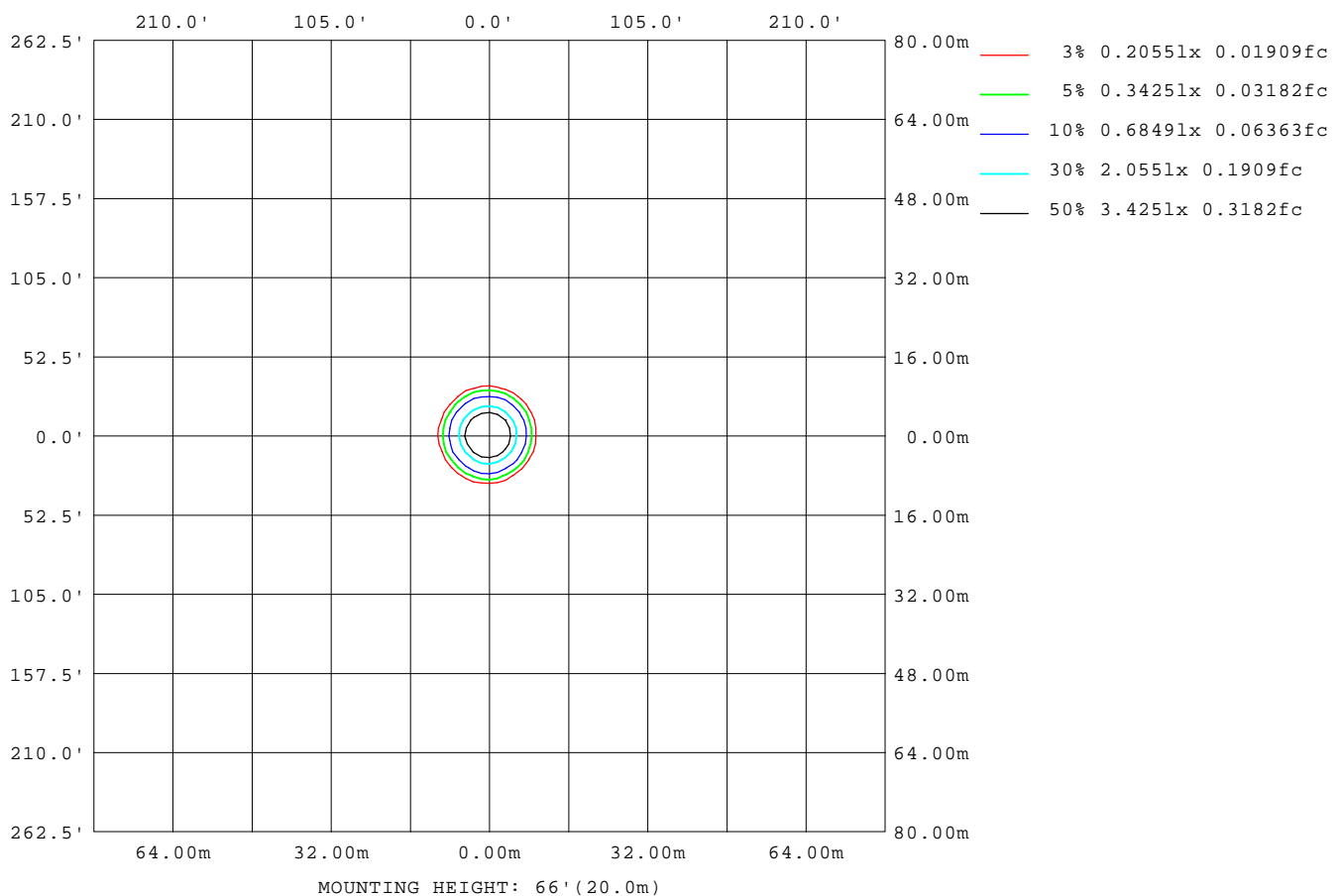
Note: The Curves indicate the illuminated area and the average illumination when the luminaire is at different distance.

C Range: 0 - 360DEG  
C Interval: 30.0DEG  
Test Speed: HIGH  
Temperature: 25.3°C  
Operators: Zoe  
Test Date: 2022-11-1

Range: 0 - 180DEG  
Interval: 1.0DEG  
Test System: EVERFINE GO-SPEX500\_V1 SYSTEM V2.00.416  
Humidity: 65.0%  
Test Distance: 3.160m [K=1.0000]  
Remarks: LAMP: CMA1306-0000-000F0U0A30G Ra:90  
LENS: PM-1084A 24R  
NO DRIVER: 500mA  
30minutes warm-up

## ISOLUX DIAGRAM

Test:U:18.727V I:0.4998A P:9.3597W PF:1.0000 Freq:59.98Hz Lamp Flux:919.82x1 lm		
NAME: 2118.565-LEA-09B	TYPE:	WEIGHT:
SPEC.: 3000K	DIM.:	SERIAL No.: 2211011096
MFR.: RISE	SUR.: 0.001256m2	Shielding Angle:



C Range: 0 - 360DEG  
C Interval: 30.0DEG  
Test Speed: HIGH  
Temperature:25.3 °C  
Operators:Zoe  
Test Date:2022-11-1

Range: 0 - 180DEG  
Interval: 1.0DEG  
Test System:EVERFINE GO-SPEX500\_V1 SYSTEM V2.00.416  
Humidity:65.0%  
Test Distance:3.160m [K=1.0000]  
Remarks: LAMP:CMA1306-0000-000F0U0A30G Ra:90  
LENS:PM-1084A 24R  
NO DRIVER:500mA  
30minutes warm-up

## LED Avg.L Report

Test:U:18.727V I:0.4998A P:9.3597W PF:1.0000 Freq:59.98Hz Lamp Flux:919.82x1 lm		
NAME: 2118.565-LEA-09B	TYPE:	WEIGHT:
SPEC.: 3000K	DIM.:	SERIAL No.: 2211011096
MFR.: RISE	SUR.: 0.001256m2	Shielding Angle:

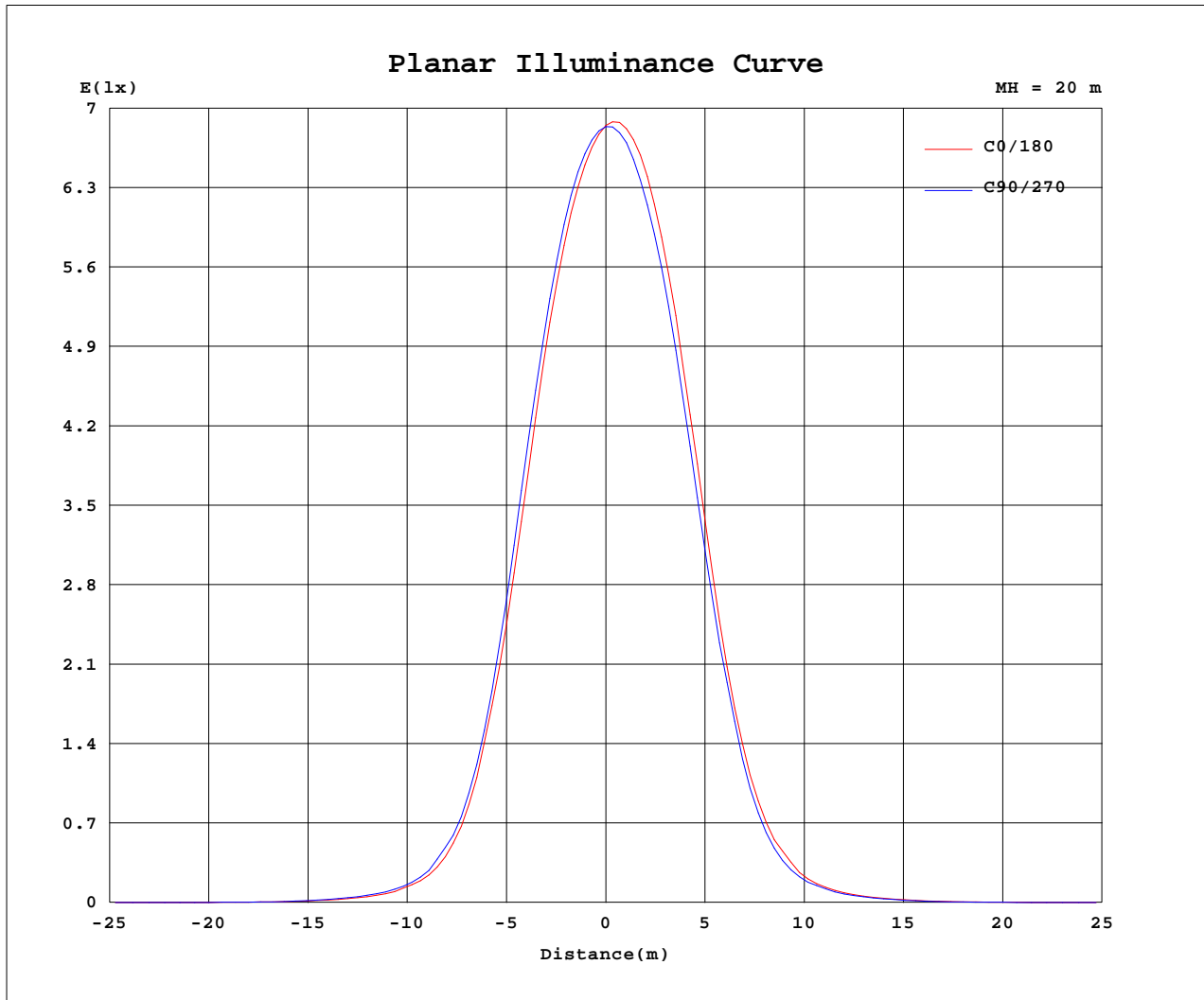
AvgL	cd/m2
L_0~180(65)av	1060
L_0~180(75)av	590
L_0~180(85)av	613
L_90~270(65)av	1081
L_90~270(75)av	573
L_90~270(85)av	572
L_45(65)av	1048
L_45(75)av	563
L_45(85)av	494

Standard: GB/T 29293-2012

C Range: 0 - 360DEG  
C Interval: 30.0DEG  
Test Speed: HIGH  
Temperature:25.3℃  
Operators:Zoe  
Test Date:2022-11-1

Range: 0 - 180DEG  
Interval: 1.0DEG  
Test System:EVERFINE GO-SPEX500\_V1 SYSTEM V2.00.416  
Humidity:65.0%  
Test Distance:3.160m [K=1.0000]  
Remarks: LAMP:CMA1306-0000-000F0U0A30G Ra:90  
LENS:PM-1084A 24R  
NO DRIVER:500mA  
30minutes warm-up

## Planar Illuminance Curve



C Range: 0 - 360DEG  
 C Interval: 30.0DEG  
 Test Speed: HIGH  
 Temperature: 25.3 °C  
 Operators: Zoe  
 Test Date: 2022-11-1

Range: 0 - 180DEG  
 Interval: 1.0DEG  
 Test System: EVERFINE GO-SPEX500\_V1 SYSTEM V2.00.416  
 Humidity: 65.0%  
 Test Distance: 3.160m [K=1.0000]  
 Remarks: LAMP: CMA1306-0000-000F0U0A30G Ra:90  
 LENS: PM-1084A 24R  
 NO DRIVER: 500mA  
 30minutes warm-up

## LUMINOUS DISTRIBUTION INTENSITY DATA

Test:U:18.727V I:0.4998A P:9.3597W PF:1.0000 Freq:59.98Hz Lamp Flux:919.82x1 lm		
NAME: 2118.565-LEA-09B	TYPE:	WEIGHT:
SPEC.: 3000K	DIM.:	SERIAL No.: 2211011096
MFR.: RISE	SUR.: 0.001256m2	Shielding Angle:

Table--1

UNIT: cd

C(DEG) (DEG)	0	30	60	90	120	150	180	210	240	270	300	330						
0	2736	2736	2736	2736	2736	2736	2736	2736	2736	2736	2736	2736						
5	2456	2452	2474	2523	2563	2603	2662	2660	2635	2577	2543	2508						
10	1787	1781	1802	1891	1974	2052	2164	2164	2130	2041	1963	1901						
15	916	916	913	1004	1078	1162	1294	1297	1281	1196	1133	1040						
20	325	321	319	366	409	459	541	547	537	486	449	389						
25	104	103	106	121	136	154	192	182	187	156	143	125						
30	39.8	39.7	42.2	48.4	54.1	59.7	66.4	68.5	64.2	58.2	53.1	46.5						
35	17.4	17.7	18.1	21.2	23.4	25.7	28.4	27.9	27.0	24.6	23.0	19.8						
40	6.58	6.51	6.46	7.00	8.98	9.15	10.3	10.1	9.33	8.80	7.62	7.61						
45	2.85	2.86	2.79	3.01	4.04	3.93	3.98	3.83	3.60	3.14	3.23	3.03						
50	1.45	1.44	1.36	1.45	1.64	1.63	1.80	1.54	1.40	1.29	1.37	1.34						
55	0.95	0.92	0.87	0.89	0.89	0.93	1.03	0.93	0.85	0.83	0.84	0.89						
60	0.72	0.63	0.60	0.61	0.61	0.63	0.76	0.68	0.67	0.67	0.67	0.68						
65	0.54	0.51	0.51	0.52	0.53	0.52	0.58	0.58	0.61	0.63	0.62	0.58						
70	0.28	0.28	0.29	0.33	0.34	0.34	0.36	0.36	0.49	0.49	0.41	0.27						
75	0.19	0.18	0.19	0.20	0.20	0.19	0.20	0.18	0.18	0.18	0.17	0.18						
80	0.11	0.11	0.12	0.13	0.12	0.12	0.13	0.12	0.11	0.11	0.10	0.11						
85	0.06	0.05	0.06	0.07	0.06	0.06	0.07	0.06	0.05	0.06	0.05	0.05						
90	0.00	0.00	0.00	0.00	0.00	0.00	0.00	0.00	0.00	0.00	0.00	0.00						
95	0.00	0.00	0.00	0.00	0.00	0.00	0.00	0.00	0.00	0.00	0.00	0.00						
100	0.00	0.00	0.00	0.00	0.00	0.00	0.00	0.00	0.00	0.00	0.00	0.00						
105	0.00	0.00	0.00	0.00	0.00	0.00	0.00	0.00	0.00	0.00	0.00	0.00						
110	0.00	0.00	0.00	0.00	0.00	0.00	0.00	0.00	0.00	0.00	0.00	0.00						
115	0.00	0.00	0.00	0.00	0.00	0.00	0.00	0.00	0.00	0.00	0.00	0.00						
120	0.00	0.00	0.00	0.00	0.00	0.00	0.00	0.00	0.00	0.00	0.00	0.00						
125	0.00	0.00	0.00	0.00	0.00	0.00	0.00	0.00	0.00	0.00	0.00	0.00						
130	0.00	0.00	0.00	0.00	0.00	0.00	0.00	0.00	0.00	0.00	0.00	0.00						
135	0.00	0.00	0.00	0.00	0.00	0.00	0.00	0.00	0.00	0.00	0.00	0.00						
140	0.00	0.00	0.00	0.00	0.00	0.00	0.00	0.00	0.00	0.00	0.00	0.00						
145	0.00	0.00	0.00	0.00	0.00	0.00	0.00	0.00	0.00	0.00	0.00	0.00						
150	0.00	0.00	0.00	0.00	0.00	0.00	0.00	0.00	0.00	0.00	0.00	0.00						
155	0.00	0.00	0.00	0.00	0.00	0.00	0.00	0.00	0.00	0.00	0.00	0.00						
160	0.00	0.00	0.00	0.00	0.00	0.00	0.00	0.00	0.00	0.00	0.00	0.00						
165	0.00	0.00	0.00	0.00	0.00	0.00	0.00	0.00	0.00	0.00	0.00	0.00						
170	0.00	0.00	0.00	0.00	0.00	0.00	0.00	0.00	0.00	0.00	0.00	0.00						
175	0.00	0.00	0.00	0.00	0.00	0.00	0.00	0.00	0.00	0.00	0.00	0.00						
180	0.00	0.00	0.00	0.00	0.00	0.00	0.00	0.00	0.00	0.00	0.00	0.00						

C Range: 0 - 360DEG  
C Interval: 30.0DEG  
Test Speed: HIGH  
Temperature:25.3℃  
Operators:Zoe  
Test Date:2022-11-1

Range: 0 - 180DEG  
Interval: 1.0DEG  
Test System:EVERFINE GO-SPEX500\_V1 SYSTEM V2.00.416  
Humidity:65.0%  
Test Distance:3.160m [K=1.0000]  
Remarks: LAMP:CMA1306-0000-000F0U0A30G Ra:90  
LENS:PM-1084A 24R  
NO DRIVER:500mA  
30minutes warm-up